



Turbine Vibrators T

High speed and high working torque for strong vibration at large amplitude.

Properties

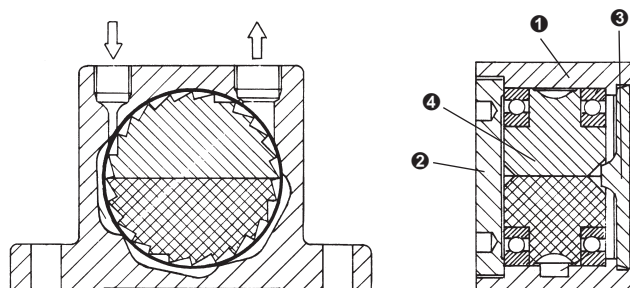
- Rated frequency 6'500 – 23'000 min⁻¹
- Centrifugal force 600 – 6'060 N
- Continuously variable
- Applicable up to 100°C
- Resistant against extreme environmental conditions
- Low noise level
- Also available with ATEX certification

Construction

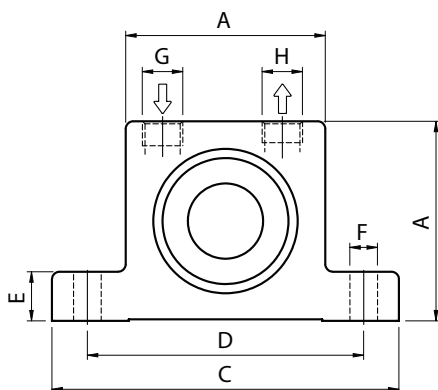
- Vibration with a high excentric torque, caused by the rotor's imbalance
- Rotor on two ball bearings arranged in pairs

Field of application

- Emptying of bunkers
- Screen filters
- Vibrating tables
- Preventing adhesions in pipelines and silos
- Transporting of fine powders
- Moving of bulk solids



- ❶ Housing anodized of extruded aluminium alloy
- ❷ Synthetic cap with screw thread
- ❸ Nylon cap
- ❹ Rotor, half of aluminium, respectively bronze



Dimensions and weights

Model	A [mm]	Width [mm]	C [mm]	D [mm]	E [mm]	F [mm]	G BSP	H BSP	Weight [kg]
T-50 / LP	50	46	86	68	12	7	G 1/8"	G 1/4"	0.38
T-50 / HP	50	60	86	68	12	7	G 1/8"	G 1/4"	0.52
T-65 / LP	65	50	113	90	16	9	G 1/4"	G 1/4"	0.73
T-65 / HP	65	64	113	90	16	9	G 1/4"	G 1/4"	0.97
T-80 / LP	80	56	128	104	16	11	G 1/4"	G 3/8"	1.21
T-80 / HP	80	70	128	104	16	11	G 1/4"	G 3/8"	1.56
T-100 / HP	100	67	160	130	20	13	G 3/8"	G 3/8"	2.27

Technical data

Model	Vibrations [x 1000 min ⁻¹]			Centrifugal force [N]			Air consumption [l/min]		
	2 bar	4 bar	6 bar	2 bar	4 bar	6 bar	2 bar	4 bar	6 bar
T-50 / LP	17.0	21.5	23.0	700	1'240	1'710	67	115	165
T-50 / HP	11.0	14.5	16.5	600	1'020	1'350	79	140	198
T-65 / LP	9.5	13.0	15.0	770	1'380	1'800	89	157	236
T-65 / HP	8.5	10.5	12.0	1'300	2'050	2'600	108	193	290
T-80 / LP	9.0	11.5	13.0	1'840	2'960	3'790	150	260	385
T-80 / HP	-	9.0	10.5	-	3'470	4'740	-	260	385
T-100 / HP	-	9.0	10.0	-	4'800	6'060	-	300	430